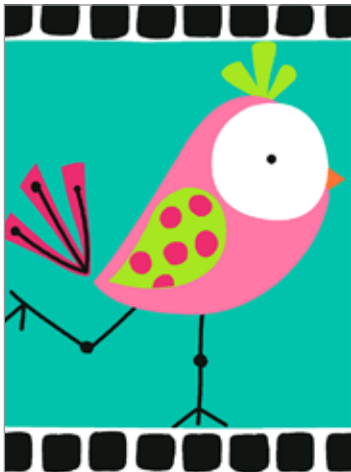


# Sweet Tweets

BY KIM SCHAEFER



Bird Whimsy Quilt  
designed by:  
**Kim Schaefer**

Quilt Size: 66" x 66"  
[andoverfabrics.com](http://andoverfabrics.com)



## About Sweet Tweets

While in college, I spent a semester studying in Mexico. I have always enjoyed and been somewhat influenced by the whimsical folk art created by artisans in the Oaxaca area. The Sweet Tweets collection was inspired by the colorful, whimsical wood carvings found in that area. — *Kim Schaefer*

andover

makower uk  
*The Henley Studio*

Free Pattern Download Available

1384 Broadway New York, NY 10018  
Tel. (800) 223-5678 • [andoverfabrics.com](http://andoverfabrics.com)

Revised 5/10/16

# Bird Whimsy Quilt



Introducing Andover Fabrics new collection: **SWEET TWEETS** by Kim Schaefer

Quilt designed by Kim Schaefer

Quilt finishes 66" x 66"

20 Blocks: 9" x 9"

*Cheerful and bold and full of charm, this fun wall quilt is so, so easy to put together, you'll be whistling a happy tune as you make it. The novelty prints bring life and color, and the black and white prints make the bright colors pop.*

## Cutting Directions

**Note:** Read assembly directions before cutting patches. All measurements are cut sizes and include 1/4" seam allowances. A fat 1/4 is an 18" x 20"-22" cut. Borders are cut the exact lengths required plus 1/4" seam allowances. WOF designates the width of fabric from selvedge to selvedge (approximately 42" wide).

### Fabric A

Fussy-cut (20) squares 5 1/2"

### Fabric B

Fussy-cut (2) tree borders 6" x 66 1/2", cut lengthwise  
Fussy-cut (2) tree borders 6" x 55 1/2", cut lengthwise  
Fussy-cut (3) leaf sashes 3 1/2" x 45 1/2", cut lengthwise

### Fabric C

Cut (2) borders 3 1/2" x 55 1/2", cut lengthwise  
Cut (2) borders 3 1/2" x 49 1/2", cut lengthwise

### Fabric D

Cut (2) borders 2 1/2" x 49 1/2", cut crosswise and pieced  
Cut (2) borders 2 1/2" x 45 1/2", cut crosswise and pieced

### Fabric E

Cut (7) strips 2 1/2" x WOF for binding

### 6 White Prints

From each:  
Cut (6 or 7) strips 1 1/2" x 7 1/2" (40 strips total)  
Cut (6 or 7) strips 1 1/2" x 5 1/2" (40 strips total)

### 5 Black Prints

From each:  
Cut (8) strips 1 1/2" x 9 1/2" (40 strips total)  
Cut (8) strips 1 1/2" x 7 1/2" (40 strips total)

### Backing

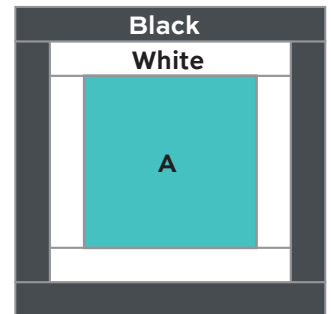
Cut (2) panels 36" x 72", pieced to fit quilt top with overlap on all sides

## Fabric Requirements

		Yardage	Fabric	
<b>Fabric A</b>	blocks	1 panel (2/3 yard)	8349-X	
<b>Fabric B</b>	border	2 1/4 yards	8350-K	
<b>Fabric C</b>	border	1 3/4 yards	8355-K	
<b>Fabric D</b>	border	1/2 yard	8358-K	
<b>Fabric E</b>	binding	5/8 yard	8358-KL	
<b>6 White Prts.</b>	blocks	fat 1/4 yard each		
		8351-AK	8352-AK	8354-AK
		8356-AK	8357-AK	8358-AK
<b>5 Black Prts.</b>	blocks	fat 1/4 yard each		
		8351-K	8352-K	8354-K
		8356-K	8357-K	
<b>Backing</b>		4 1/4 yards	8358-X	

## Making the Quilt

- Carefully cut the 5 1/2" squares from the Fabric A panel so that you don't inadvertently cut into the motifs. Cut 20 motifs.
- Referring to the Block diagram, sew white strips around the center square, sides on first, and then sew black strips around the block. Arrange the prints so every block has a different combination of black and white strips around it. Make 20 blocks.
- Referring to the Quilt Diagram, arrange the blocks as shown in the quilt, or in the order you wish. Join 5 blocks side by side, being certain that the motifs remain upright in the row. Make 4 rows like this. Join the rows alternately with the 3 Fabric B sashes.
- Sew the borders in the order shown, sewing side borders on first in each round.



## Finishing the Quilt

- Layer the quilt with batting and backing and baste. Quilt in the ditch around borders and block patches. Quilt around the printed motifs in the blocks and outer border. Bind to finish the quilt.

# Bird Whimsy Quilt

---



Quilt Diagram



# Sweet Tweets

BY KIM SCHAEFER



8349-K



8349-X\*



8350-K\*



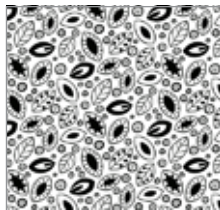
8350-X



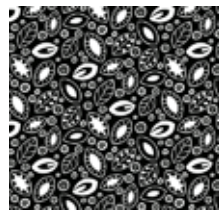
8351-AK\*



8351-K\*



8352-AK\*



8352-K\*



8354-AK\*



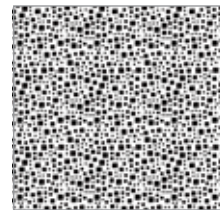
8354-K\*



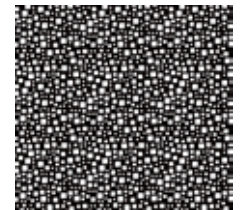
8355-K\*



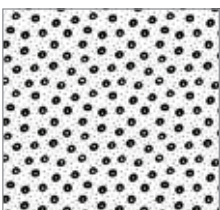
8355-X



8358-AK\*



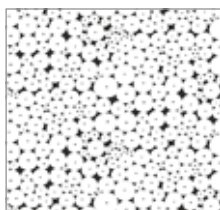
8358-K\*



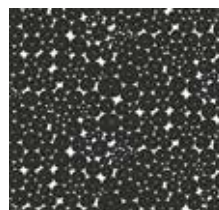
8356-AK\*



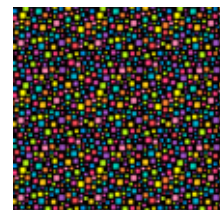
8356-K\*



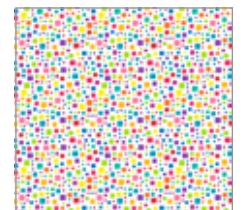
8357-AK\*



8357-K\*



8358-K1\*



8358-X\*

\*Indicates fabrics used in quilt pattern.  
Fabrics shown are 10% of actual size.

andover

makower uk  
*The Henley Studio*

Free Pattern Download Available

1384 Broadway New York, NY 10018  
Tel. (800) 223-5678 • andoverfabrics.com

Revised 5/10/16